

Aligning Global Efforts on Maternal and Newborn Health



AlignMNH Opening Forum

Allisyn Moran, WHO on behalf of ENAP and EPMM

Each year

295,000 women die during pregnancy, childbirth, and postnatal periods

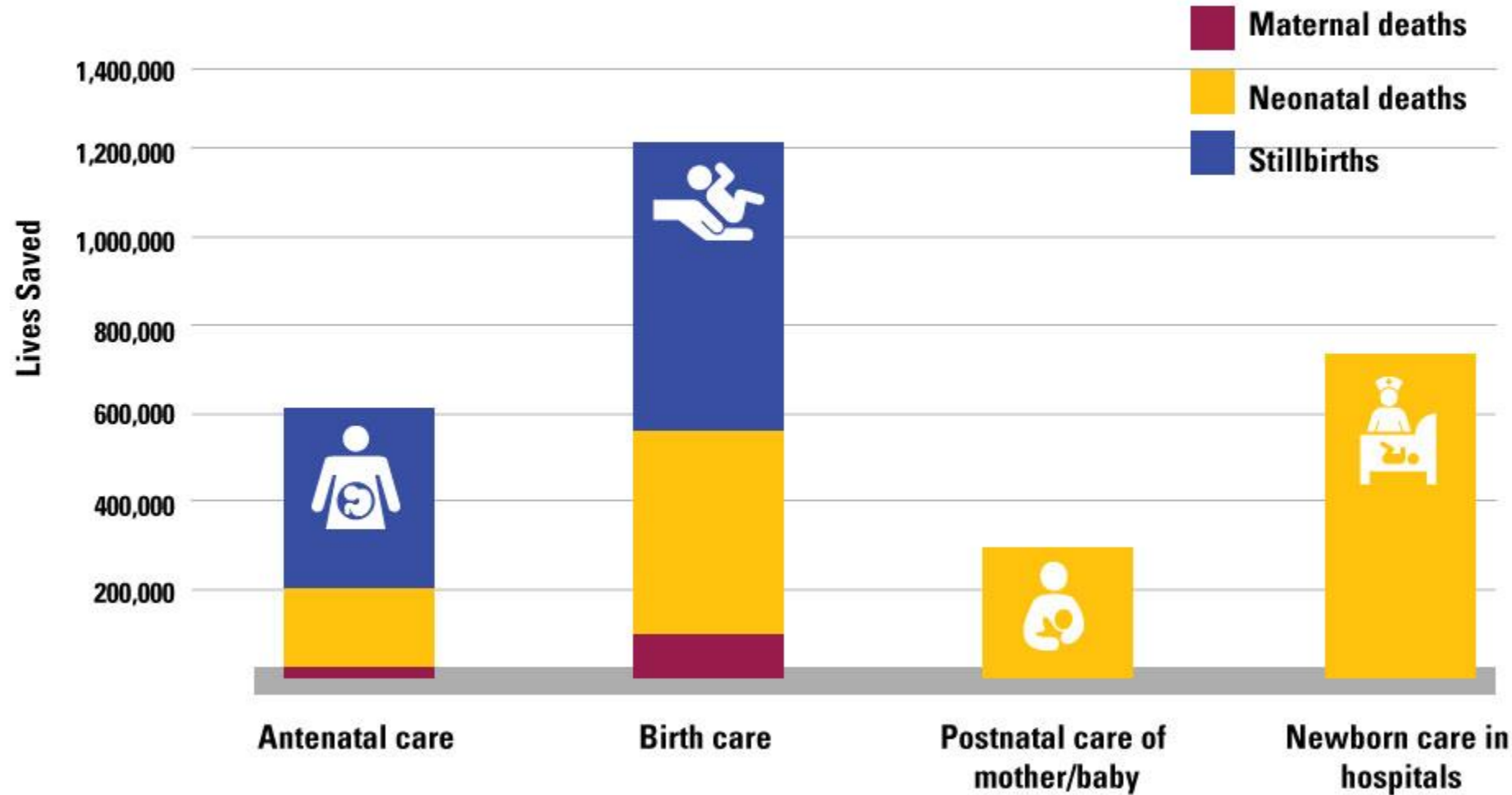
2.5 million newborns die in first 28 days, 47% of U5 child deaths

More than 2 million are stillborn, half during labour

99% of these deaths happen in low & middle income countries, especially for the poorest families BUT most are preventable.

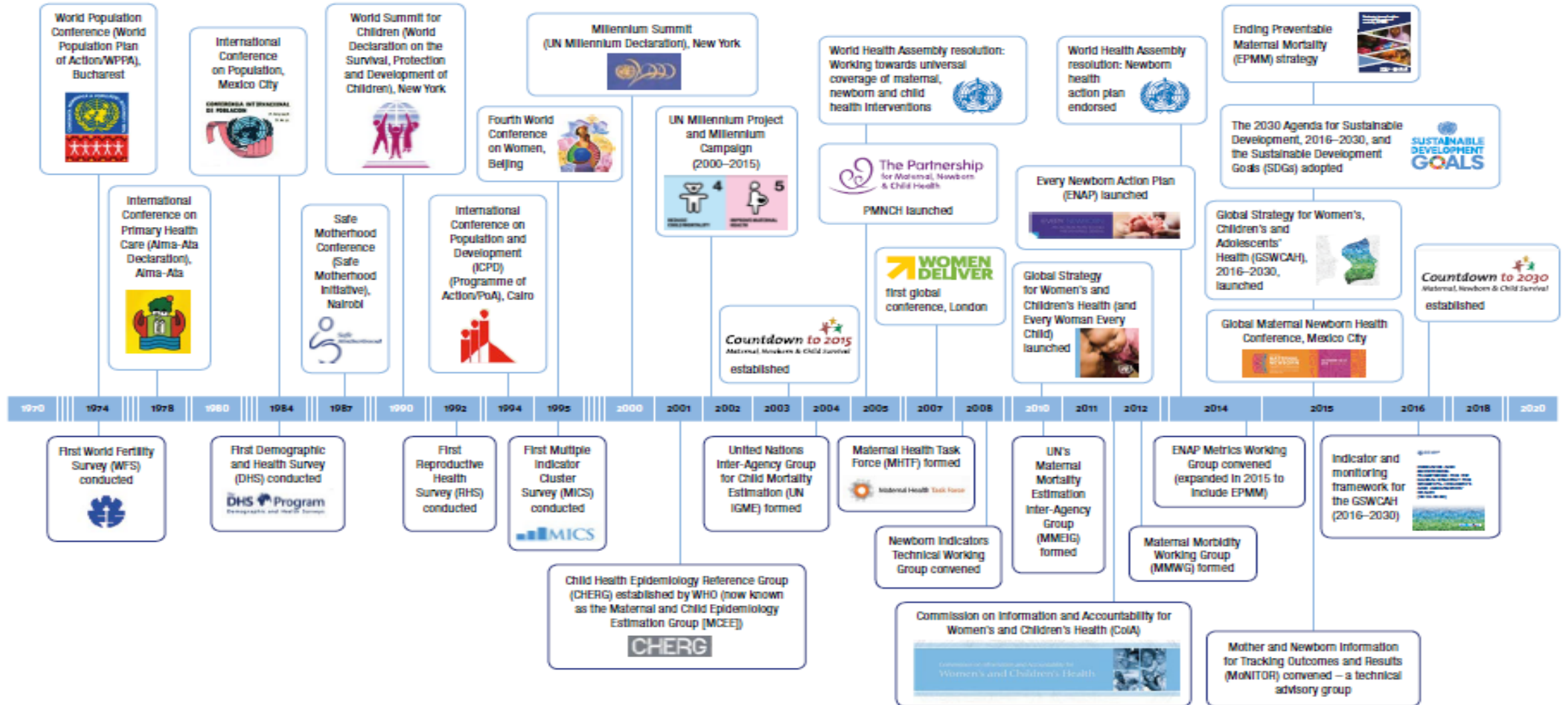
Investment in MN care saves lives

Lives saved (LiST) analysis for 2030 compared to baseline 2016, if 90% universal coverage



Potential impact of around 3 million lives saved, around half in Africa

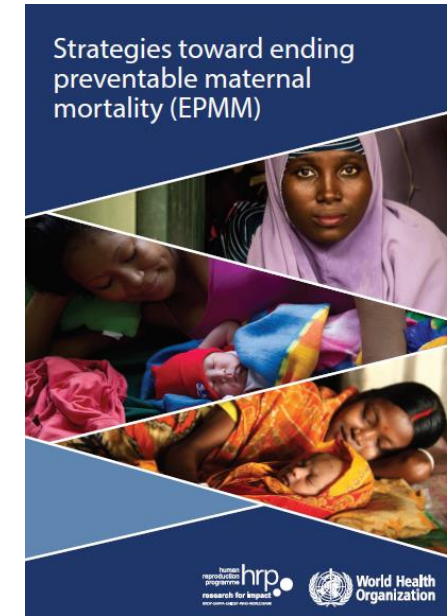
Global attention for maternal and newborn health



Ending Preventable Maternal Mortality (EPMM) and Every Newborn Action Plan (ENAP)

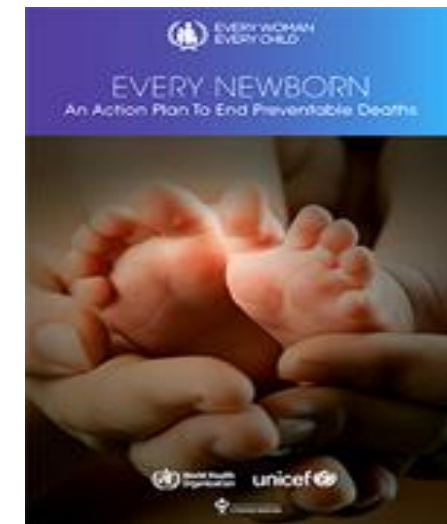
EPMM

- Launched in 2015
- Outlined SDG targets and strategies for ending preventable maternal mortality across 11 themes including proximal and distal determinants
- EPMM Roadmap, coverage targets and milestones in process



ENAP

- WHA Resolution in 2014
- Outlined SDG targets for neonatal mortality reduction and ending preventable stillbirths
- 2020-2025 Coverage Targets and Milestones launched on 3 September 2020



Mortality Targets for 2030

Ending Preventable Maternal Mortality aims to end preventable maternal deaths:

- Global target: MMR of less than 70/100 000 live births
- Supplementary national target is that no country should have an MMR greater than 140/100 000 live births by 2030.

SDG3.1.1 – Maternal mortality target included

Every Newborn Action Plan aims to end preventable deaths, setting the first ever national mortality targets:

- ≤ 12 neonatal deaths per 1000 live births
- ≤ 12 stillbirths per 1000 total births

SDG3.2.2: Neonatal target was included.

Stillbirths not in SDGs, but included in the Global Strategy for Women, Children and Adolescent Health & deserve more attention.

ENAP and EPMM Strategic Objectives are complimentary

ENAP Strategic Objectives





1. Strengthen and invest in care around the time of birth, with a focus on improving quality and experience of care, while ensuring full integration of services for mothers and babies across the continuum of care
2. Strengthen health systems to optimise the organisation and delivery of care, the workforce, commodities, and innovation
3. Reach every woman and newborn by minimising inequities in access to and coverage of care
4. Harness the power of parents, families, and communities, and engage with society
5. Improve data for decision making and accountability

EPMM Strategic Objectives

1. Address inequities in access to and quality of sexual, reproductive, maternal, and newborn healthcare
2. Ensure universal health coverage for comprehensive sexual, reproductive, maternal, and newborn healthcare
3. Address all causes of maternal mortality, reproductive and maternal morbidities, and related disabilities
4. Strengthen health systems to respond to the needs and priorities of women and girls
5. Ensure accountability to improve quality of care and equity



ENAP/EPMM coverage targets 2020-2025

COVERAGE TARGET 1	 EVERY PREGNANT WOMAN	Indicator: Four or more antenatal care contacts <table><tr><td>Global target</td><td>90% global coverage of four or more antenatal care contacts</td></tr><tr><td>National target</td><td>90% of countries have > 70% coverage</td></tr><tr><td>Subnational target</td><td>80% of districts have > 70% coverage</td></tr></table>	Global target	90% global coverage of four or more antenatal care contacts	National target	90% of countries have > 70% coverage	Subnational target	80% of districts have > 70% coverage
Global target	90% global coverage of four or more antenatal care contacts							
National target	90% of countries have > 70% coverage							
Subnational target	80% of districts have > 70% coverage							
COVERAGE TARGET 2	 EVERY BIRTH	Indicator: Births attended by skilled health personnel <table><tr><td>Global target</td><td>90% global average coverage of births attended by skilled health personnel</td></tr><tr><td>National target</td><td>90% of countries with > 80% coverage</td></tr><tr><td>Subnational target</td><td>80% of districts with > 80% coverage</td></tr></table>	Global target	90% global average coverage of births attended by skilled health personnel	National target	90% of countries with > 80% coverage	Subnational target	80% of districts with > 80% coverage
Global target	90% global average coverage of births attended by skilled health personnel							
National target	90% of countries with > 80% coverage							
Subnational target	80% of districts with > 80% coverage							
COVERAGE TARGET 3	 EVERY WOMAN AND NEWBORN	Indicator: Early routine postnatal care (within 2 days) <table><tr><td>Global target</td><td>80% global coverage of early postnatal care</td></tr><tr><td>National target</td><td>90% of countries with > 60% coverage</td></tr><tr><td>Subnational target</td><td>80% of districts with > 60% coverage</td></tr></table>	Global target	80% global coverage of early postnatal care	National target	90% of countries with > 60% coverage	Subnational target	80% of districts with > 60% coverage
Global target	80% global coverage of early postnatal care							
National target	90% of countries with > 60% coverage							
Subnational target	80% of districts with > 60% coverage							
COVERAGE TARGET 4	 EVERY SMALL AND EVERY SICK NEWBORN	<table><tr><td>Global target</td><td>80% of countries have a national implementation plan that is being implemented in at least half the country, with an appropriate number of functional level-2 inpatient units linked to level-1 units to care for small and sick newborns, with family-centred care.</td></tr><tr><td>National and Subnational targets</td><td>80% of districts (or equivalent subnational unit) have at least one level-2 inpatient unit to care for small and sick newborns, with respiratory support including provision of continuous positive airway pressure. (See Table 1 for definitions of levels 1 and 2 newborn units.)</td></tr></table>	Global target	80% of countries have a national implementation plan that is being implemented in at least half the country, with an appropriate number of functional level-2 inpatient units linked to level-1 units to care for small and sick newborns, with family-centred care.	National and Subnational targets	80% of districts (or equivalent subnational unit) have at least one level-2 inpatient unit to care for small and sick newborns, with respiratory support including provision of continuous positive airway pressure. (See Table 1 for definitions of levels 1 and 2 newborn units.)		
Global target	80% of countries have a national implementation plan that is being implemented in at least half the country, with an appropriate number of functional level-2 inpatient units linked to level-1 units to care for small and sick newborns, with family-centred care.							
National and Subnational targets	80% of districts (or equivalent subnational unit) have at least one level-2 inpatient unit to care for small and sick newborns, with respiratory support including provision of continuous positive airway pressure. (See Table 1 for definitions of levels 1 and 2 newborn units.)							

EPMM coverage targets 2020-2025

Target 4 Every Pregnant Woman with obstetric complications	Indicator: Proportion of the population covered by functional EmONC health facilities within 2hr travel time <ul style="list-style-type: none">▪ Global target: at least 60% of the population is able to physically access a functional EmONC health facility within maximum 2 hours of travel time – to be confirmed▪ National and sub-national targets: to be defined
Target 5 On broader determinants of MH	Indicator: Proportion of women aged 15-49 who make their own informed and empowered decisions regarding sexual relations, contraceptive use, and reproductive health care (SDG 5.6.1.) <ul style="list-style-type: none">▪ Global target: 65% average coverage – to be confirmed▪ National and sub-national targets: to be defined

ENAP and EPMM milestones are aligned

ENAP Milestones

1. Policy and Plans
2. Quality of Care
3. Data for Action
4. Investment
5. Response and Resilience
6. Health Workforce
7. Commodities
8. Accountability
9. Research & Innovation

EPMM Milestones

1. Policy and Plans
2. Quality of Care
3. Equity
4. Data for Action
5. Investment
6. Health Workforce
7. Commodities
8. Response and Resilience
9. Accountability
10. Research, Innovation and knowledge exchange

ENAP and EPMM Key Messages

- Healthy woman and newborn at center of both initiatives
- Focus is country ownership and impact to achieve SDG targets
- Partnership is crucial – global, regional and country levels for implementation and monitoring
- ENAP leading, EPMM re-vitalizing
 - ENAP finalizing Results Framework 2021-2025
 - EPMM milestones and targets to be launched Summer 2021, then Results Frameworks in process working with 20 priority countries
- Preventing stillbirths is embedded in both initiatives
- Aligning maternal and newborn programs as appropriate, also focus on areas unique to maternal and newborn health to strengthen country planning, tracking progress, sharing successes and challenges

We all have a role to play – Collective Action

Country governments

Targets and plans, with investments
Routine data improved and used
Resilience, including with COVID19 pandemic

Professionals and academics

Midwives, neonatal nurses, paediatricians, obstetricians, engineers and more

Women, parents and caregivers

Voices and inputs are key at all levels

Partners

All partners including private sector and funders

Media, religious leaders, celebrities

Learning from other success stories





THANK YOU

Every year 30 million newborns are at risk

Health system response by level of care and impact on human capital

